

THIS VILLA, DESIGNED FOR A PROSPEROUS FAMILY OF FOUR, EMBODIES DUBAI'S FUSION OF OPULENCE AND CUTTING-EDGE MODERNITY. SET AGAINST THE DYNAMIC BACKDROP OF DUBAI'S SKYLINE AND DESERT LANDSCAPE, THE VILLA'S ARCHITECTURE EMBRACES THE CITY'S ETHOS OF LUXURY LIVING WITH A DISTINCTIVE BLEND OF INNOVATION AND CULTURAL RESONANCE.

THE VILLA'S MULTI-CUBIC DESIGN APPROACH CREATES A BOLD VISUAL IDENTITY, WITH INTERLOCKING CUBES THAT FORM BOTH DYNAMIC FACADES AND FUNCTIONAL INTERIOR SPACES. THIS ARCHITECTURAL APPROACH ENABLES A BALANCE BETWEEN PRIVATE AND PUBLIC AREAS, ALLOWING THE FAMILY TO ENJOY SECLUDED ZONES WHILE MAXIMIZING COMMUNAL SPACES WITH SEAMLESS INDOOR-OUTDOOR FLOW. THIS DESIGN'S MODULAR NATURE NOT ONLY ENHANCES FUNCTIONALITY BUT ALSO CREATES OPPORTUNITIES FOR TERRACES AND BALCONIES THAT CAPTURE THE WARM GLOW OF DUBAI'S SUNSET, OFFERING PANORAMIC VIEWS OF THE SURROUNDINGS.

BUILT FROM HIGH-QUALITY STONE, THE EXTERIOR RADIATES AN AURA OF LUXURY, STRENGTH, AND SOPHISTICATION, COMPLEMENTING THE REGION'S AFFINITY FOR ENDURING AND ELEGANT MATERIALS. STONE SURFACES OFFER DURABILITY AGAINST THE DESERT CLIMATE WHILE ADDING RICH TEXTURES THAT ENHANCE THE VILLA'S VISUAL APPEAL. THE LANDSCAPE INTEGRATES SEAMLESSLY WITH THE BUILDING'S DESIGN, INCORPORATING A LUSH GARDEN, SERENE POOL, AND AN ELEVATED ROOF GARDEN THAT PROVIDE A SENSE OF RELAXATION AND LUXURY. THESE OUTDOOR SPACES ARE DESIGNED TO COOL AND SOFTEN THE DESERT HEAT, WITH STRATEGICALLY PLACED GREENERY THAT FOSTERS A NATURAL MICROCLIMATE.

THE INTERIOR DESIGN ALIGNS WITH A MINIMALIST YET SUMPTUOUS AESTHETIC, WITH HIGH-END FINISHES AND MATERIALS THAT REFLECT A REFINED TASTE. EXPANSIVE GLASS WALLS BRING IN AMPLE NATURAL LIGHT WHILE MAINTAINING A SENSE OF PRIVACY AND EXCLUSIVITY. IN KEEPING WITH DUBAI'S CLIMATE, THE VILLA INCORPORATES SUSTAINABLE COOLING SYSTEMS AND ENERGY-EFFICIENT DESIGNS, ALLOWING FOR A COMFORTABLE, CLIMATE-CONSCIOUS LIFESTYLE.

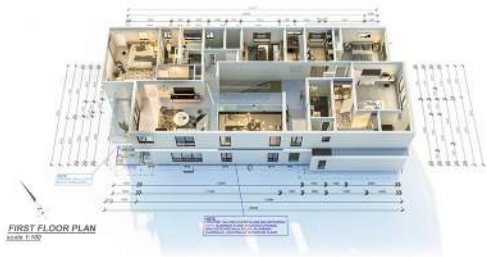
INCORPORATING ELEMENTS INSPIRED BY DUBAI'S RICH CULTURAL TAPESTRY, THE VILLA EMBRACES A STYLE THAT RESONATES WITH MODERN MIDDLE EASTERN LUXURY. THE DESIGN ULTIMATELY MERGES ELEGANCE WITH FUNCTIONALITY, OFFERING AN EXQUISITE AND COMFORTABLE HOME THAT ALIGNS WITH THE CITY'S ARCHITECTURAL SOPHISTICATION.

## LUXURY MODERN VILLA IN DUBAI, UAE DESIGN YEAR: 2021

SOFTWARES : AUTOCAD, 3DS MAX, VRAY,LUMIONPHOTOSHOP



● **UPLANDS DR. AUSTRALIA  
RESIDENCIAL PROJECT**  
DESIGN YEAR: 2022



**SOFTWARES:  
REVIT AUTODESK,  
UMION, PHOTOSHOP**

## NASHVILLE RESIDENCE (WIP) RESIDENTIAL PROJECT

MODERN LAKEFRONT VILLA IN NASHVILLE, TENNESSEE

DESIGNED TO HARMONIZE WITH NASHVILLE'S UNIQUE CLIMATE AND CULTURAL LANDSCAPE, THIS VILLA REFLECTS THE CITY'S BLEND OF MODERNITY AND NATURAL BEAUTY WHILE OFFERING A SANCTUARY FOR A FAMILY OF FIVE. POSITIONED NEAR THE LAKE, THE VILLA'S ARCHITECTURE LEVERAGES EXPANSIVE WATER VIEWS, INTEGRATING NATURE INTO DAILY LIFE AND FOSTERING A SERENE, YET DYNAMIC ENVIRONMENT.

THE VILLA'S DISTINCTIVE FORM IS ROOTED IN AN ASSEMBLY OF INTERLOCKING CUBES, WHICH CREATE DYNAMIC VOLUMES AND OFFER VERSATILITY IN SPATIAL PLANNING. THIS MULTI-CUBIC APPROACH ENABLES FUNCTIONAL ZONES THAT SEAMLESSLY ADAPT TO FAMILY LIFE, BALANCING OPEN COMMUNAL AREAS WITH INTIMATE PRIVATE SPACES. THE MODERN PLAN EMBRACES FLUIDITY, ALLOWING NATURAL LIGHT TO PERMEATE AND ENLIVEN EACH SPACE WHILE FRAMING VIEWS OF THE TRANQUIL LAKESIDE SCENERY.

REFLECTING A NATURAL MATERIAL PALETTE, THE EXTERIOR HARMONIZES WOOD, CONCRETE, AND CEMENT, GROUNDING THE VILLA WITH AN ORGANIC YET RESILIENT PRESENCE. WOOD SURFACES COMPLEMENT THE VERDANT LAKESIDE SURROUNDINGS, EVOKING WARMTH AND A CONNECTION TO NATURE, WHILE THE CONCRETE AND CEMENT ELEMENTS PROVIDE STRUCTURAL SOLIDITY AND MODERN MINIMALISM. THE NATURAL TONES AND TEXTURES RESONATE WITH NASHVILLE'S ARCHITECTURAL VERNACULAR, BLENDING CONTEMPORARY DESIGN WITH A SUBTLE SOUTHERN SENSIBILITY.

INSIDE, A MINIMALIST AESTHETIC PREVAILS, WITH CLEAN LINES, UNCLUTTERED SPACES, AND FINISHES THAT ENHANCE BOTH FUNCTIONALITY AND COMFORT. THE OPEN-CONCEPT INTERIOR SUPPORTS FAMILY INTERACTIONS, WHILE STRATEGIC SEPARATIONS CREATE A SENSE OF PRIVACY AND RETREAT. SUSTAINABLE DESIGN ELEMENTS ARE INCORPORATED THROUGHOUT TO SUPPORT ENERGY EFFICIENCY, ADAPTING THE VILLA TO NASHVILLE'S SEASONAL CLIMATE SHIFTS, THUS FOSTERING A HOME THAT IS AS SUSTAINABLE AS IT IS SOPHISTICATED



● **NASHVILLE RESIDENCE (WIP)**  
**RESIDENTIAL PROJECT**  
**DESIGN YEAR: 2021**



SOFTWARES : AUTOCAD, 3DS MAX, VRAY, PHOTOSHOP

● MY VISUAL JOURNEYS: ITALY, TURKEY,  
CANADA, AND UAE

DUBAI, 2020  
BUILT AREA: 3000M<sup>2</sup>



● MY VISUAL JOURNEYS: ITALY, TURKEY, CANADA, AND UAE



MY VISUAL JOURNEYS: ITALY, TURKEY,  
CANADA, AND UAE



SKY TOWERS,STANBUL,TURKEY  
DESIGN YEAR:2023



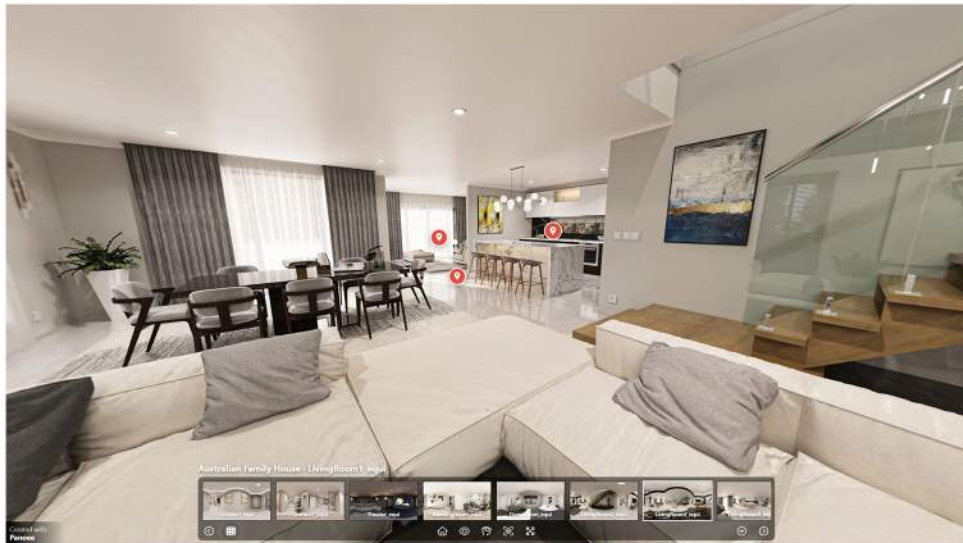
VANCOUVER, CANADA  
DESIGN YEAR:2020



VANCOUVER, CANADA  
DESIGN YEAR:2021

● **UPLANDS DR. AUSTRALIA  
RESIDENCIAL PROJECT**  
DESIGN YEAR: 2022

**EXPLORE THE PROJECT IN VR VISUALIZATION**



MY VISUAL JOURNEYS: ITALY, TURKEY,  
CANADA, AND UAE

---



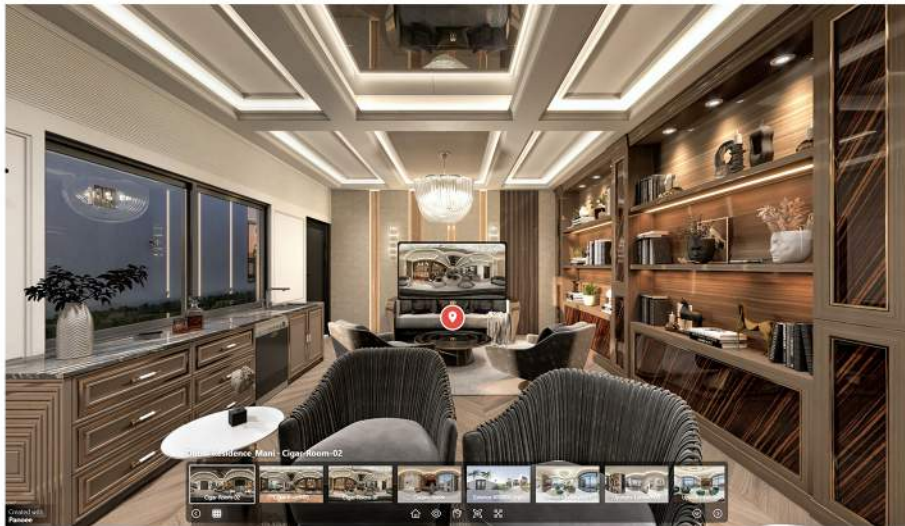
MY VISUAL JOURNEYS: ITALY, TURKEY,  
CANADA, AND UAE



THE MEETING ROOM OF A GRAPHIC DESIGNER COMPANY IN TURIN, ITALY

LUXURY MODERN VILLA  
IN DUBAI, UAE  
DESIGN YEAR: 2021

EXPLORE THE PROJECT IN VR VISUALIZATION





ROVE CONCEPTS, REMOTE JOB FOR AB LUXOR COMPANY  
IN VANCOUVER, CANADA, FEB 2022





**Interior Spaces:**.....

- Living Area: The living space, with its large windows and natural lighting, offers a serene and pleasant environment for relaxation and enjoying the forest views.
- Kitchen and Dining Area: A modern and efficient kitchen adjacent to the dining area is designed with an open layout and natural materials, reinforcing the sense of unity with nature.
- Bedroom: The bedroom, with direct views of the pristine forest, provides a tranquil and romantic space for the couple.

**Exterior Spaces:**.....

- Terrace: Large terraces with seating areas and a fire pit offer the opportunity to enjoy the fresh air and starry nights of the forest.
- Activity Area: An area designed for off-road and adventurous activities provides ideal conditions for enthusiasts of this lifestyle.

**Conclusion:**.....

The A-frame villas in the forest, with their blend of modern design and natural materials, offer a unique experience of living in the heart of nature for couples passionate about off-road living and adventure. This project successfully balances aesthetics with functionality, creating a harmonious and engaging living environment.

# Una corince Vita

softwares:3Ds max-Lumion-Photoshop

**A-Frame Villas in the Forest**

This project involves the design of A-frame villas situated in the middle of a forest for a couple who are passionate about off-road living and adventure. These villas are designed with a focus on creating a unique experience of living in nature, utilizing the pristine beauty of the forest.

**Objectives and Requirements:**

The clients were looking for a space to escape urban life and connect more closely with nature. Their primary need was a space that could provide both relaxation and suitable conditions for off-road and adventurous activities.

**Design and Strategies:**

These villas are designed in an A-frame style, which, with its simple lines and distinctive shape, creates a beautiful harmony with the forest environment. The use of natural materials such as wood and glass not only provides a warm and inviting atmosphere but also enhances the visual and physical connection with the surrounding nature.

**Interior Spaces:**

- Living Area: The living space, with its large windows and natural lighting, offers a serene and pleasant environment for relaxation and enjoying the forest views.
- Kitchen and Dining Area: A modern and efficient kitchen adjacent to the dining area is designed with an open layout and natural materials, reinforcing the sense of unity with nature.
- Bedroom: The bedroom, with direct views of the pristine forest, provides a tranquil and romantic space for the couple.

**Exterior Spaces:**

- Terrace: Large terraces with seating areas and a fire pit offer the opportunity to enjoy the fresh air and starry nights of the forest.
- Activity Area: An area designed for off-road and adventurous activities provides ideal conditions for enthusiasts of this lifestyle.

**Conclusion:**

The A-frame villas in the forest, with their blend of modern design and natural materials, offer a unique experience of living in the heart of nature for couples passionate about off-road living and adventure. This project successfully balances aesthetics with functionality, creating a harmonious and engaging living environment.

Viandante della neve



# ALAMUT CAMPING HOTEL



الأموت

۱۲



We designed Alamut health and accommodation centre in a pristine forest location between mountains covered with evergreen pine trees and a raging river with sources of mineral and therapeutic hot springs.

The client of this project wanted to give his project the accent of Iranian architecture, which was the neighbouring country of the hotel area.

The main goal of this centre is to improve the mental and physical health of its passengers within a period of one week to one month with its own weekly and monthly programs, including yoga, organic food harvested from the greenhouse and animal husbandry section of the complex, meditation in the middle of the forest, Pottery, slingshot, fishing and participating in the performances of the Sama dance teams and spiritual songs, etc.

In designing this collection, we paid special attention to the children's world and improving the quality of stay for the children of the families. Experiencing real life away from computer games, with real friends and experiencing small-scale teamwork could be very fun. The experience of cooking bread, pizza and cake in small ovens designed for children's cooking, fishing with their friends, planting and harvesting vegetables By their own hands and even trying out their sales department could make an important aspect of their personality in the days away from school.

And we designed all these parts for them.

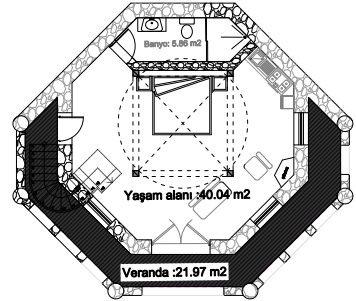
With the partnership and cooperation of the mayor of the region, they are going to perform a wide zipline from the forest mountain of this complex, which passes over the beautiful river of Orhaneli Deliballilar road, and this is very exciting.

The design of the spa and Turkish bath section of this collection has a unique geometry.

It goes without saying that one of the most attractive features of this camping hotel is that it is twenty minutes away from one of the best ski slopes in Turkey called Uludag. As a result, it is one of the best choices for sports lovers and those who love themselves and their health.

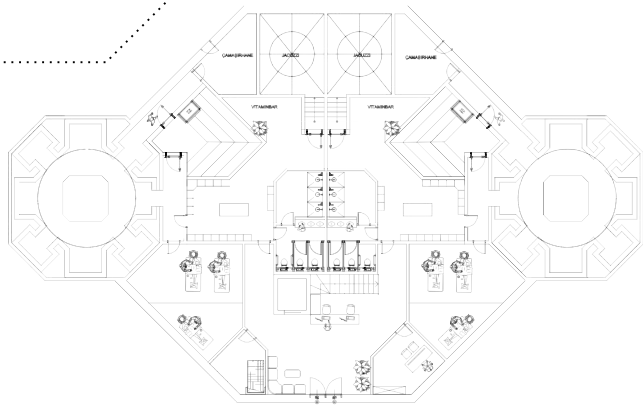


## BUNGALOV PLANI Ö:1/50

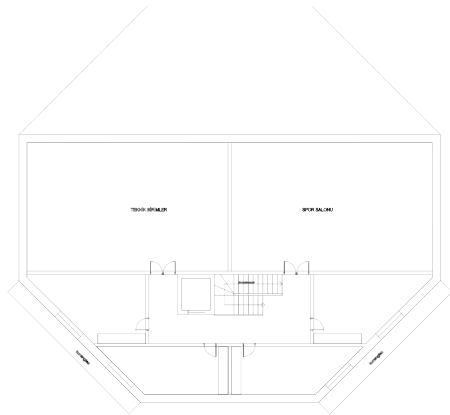


$$40.04\text{m}^2 + 21.97\text{m}^2 + 5.86\text{m}^2 = 67.87\text{m}^2$$



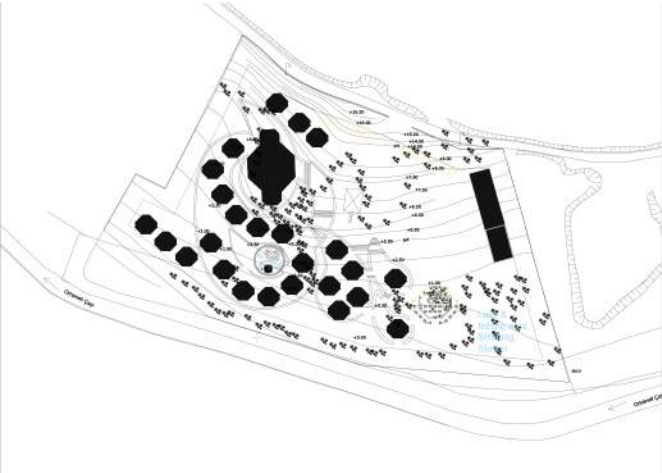


ZEMİN KAT PLANI



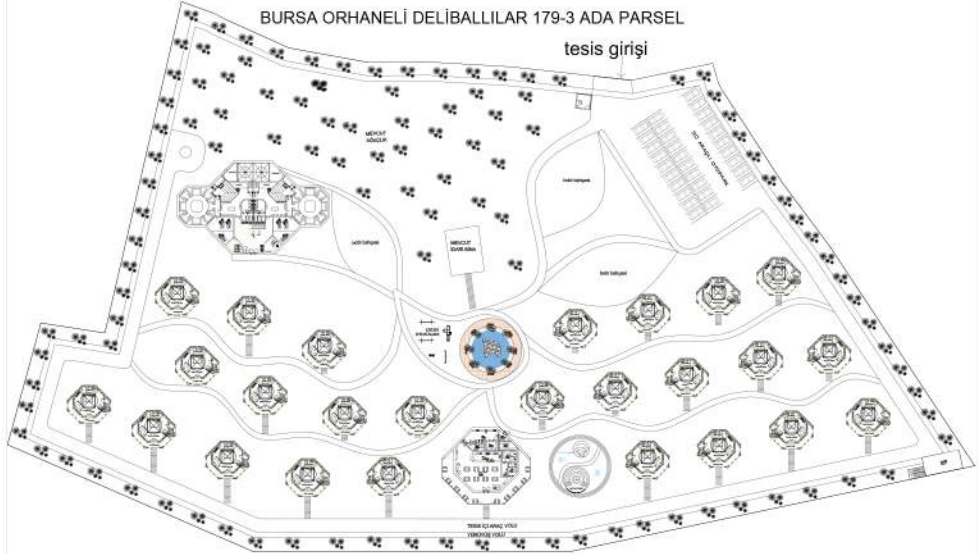
BODRUM KAT PLANI

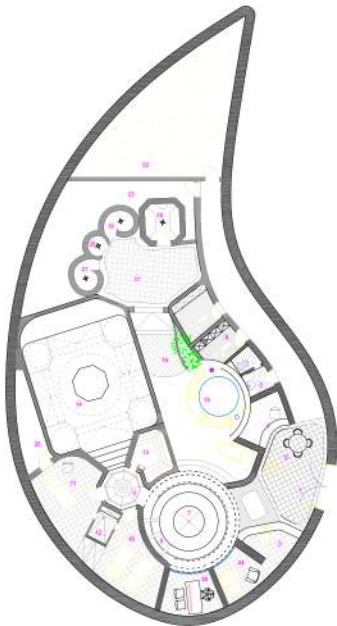
SPA complex



BURSA ORHANELİ DELİBALLILAR 179-3 ADA PARSEL

tesis girişi





1. ENTRANCE
2. WAITING AREA
3. RECEPTION
4. COFFEE BAR
5. WC
6. LOCKER ROOM
7. KNEEP FACILITY
8. HEATED BENCH
9. FILTER
10. MASSAGE
11. HAY BATHS
12. MUTUAL BATH
13. SAUNA
14. TURKISH HAWMAM
15. JACUZZI
16. STERILIZATION
17. ICE WATERFALL
18. AROMA BATH
19. TROPICAL RAINFALL
20. CERVICAL WATERFALL
21. COLD MIST
22. YOGA
23. TECHNICAL ROOM
24. RESTROOM
25. MANAGEMENT AND ACCOUNTING
26. WAREHOUSE



TWIN BROTHERS VILLA ●

#### Family Villa for Two Brothers

This villa project was designed for two brothers who live in different cities and purchased land halfway between these two cities in Albania to spend holidays with their families.

#### Objectives and Requirements:

The primary requirement from the clients was to focus on creating communal spaces so that both families could spend more time together. Therefore, the design of spaces such as a shared dining hall, living areas, and gathering spaces was of paramount importance. Additionally, given the presence of children, emphasis was placed on creating safe and suitable spaces for children's play and activities.

#### Design and Strategies:

To meet these needs, the villa was designed in a modern and minimalist style. This style, characterized by the use of simple lines and pure forms, conveys a sense of tranquility and order. An open-plan design was employed to create visual and spatial connections between different areas of the villa, facilitating family interactions.

#### Communal Spaces:

- Dining Hall: This space was meticulously designed to comfortably accommodate both families. The use of large and flexible tables allows for various configurations to suit different gatherings and events.
- Living Area: The central living space is designed so that all family members can relax and enjoy time together. Natural lighting through large windows and high ceilings enhances the feeling of spaciousness and openness.

#### Children's Spaces:

- Play Area: A dedicated play area for children was incorporated into the design, using safe materials and child-friendly designs to create an appropriate environment for play and creativity.
- Children's Rooms: The children's rooms were designed considering various age-related needs and interests, including ample storage space for toys and educational materials.

#### Conclusion:

This villa, with its focus on creating communal and family-oriented spaces, while adhering to modern and minimalist design principles, provides a serene and functional environment for both families. The flexible and responsive design, tailored to the diverse needs of its users, makes this project a successful example of blending aesthetics with functionality.

#### Biophilic Villa Design with Integrated Nature and Central Garden

This project involves the design of a villa that seamlessly integrates with its natural surroundings through biophilic principles. The design emphasizes harmony with nature by incorporating materials such as stone and wood, and features sophisticated lighting that highlights the beauty of the central garden. The clean and sharp lines of the architectural plan contrast with the organic softness of natural elements, creating a nuanced sense of modernity.

#### Design Objectives and Approach:

The primary objective of this design is to foster a deep connection between the interior environment and its natural context, enhancing occupants' physiological and psychological well-being. The villa employs biophilic design principles to create a sensory-rich environment that supports cognitive function and emotional health. By leveraging biophilic elements, the design aims to improve overall quality of life and encourage a restorative interaction with nature.

#### Materials and Strategies:

- Stone: Stone is utilized for its durability and natural aesthetics. Its geological properties provide thermal mass and stability, contributing to the villa's passive climate control. The tactile qualities of stone engage the somatosensory system, reinforcing feelings of permanence and grounding, which positively influence stress reduction and environmental satisfaction.
- Wood: Wood's inherent warmth and textural richness introduce a contrasting element to the solidity of stone. From a neurobiological perspective, wood interacts with the parasympathetic nervous system, fostering relaxation and stress relief. The natural patterns of wood stimulate the visual cortex and support a biophilic connection by mimicking natural forms, enhancing both emotional comfort and cognitive clarity.
- Lighting: The lighting strategy employs dynamic and adaptive techniques to enhance the visual and sensory impact of the garden. By utilizing LED and accent lighting, the design accentuates plant textures and forms, stimulating the brain's visual processing centers and promoting circadian rhythm regulation. This approach improves mood, productivity, and aligns with the principles of environmental psychology to create a restorative atmosphere.

#### Interior Spaces:

- Central Garden: The central garden serves as the focal point of the villa, integrating biophilic elements to enhance indoor-outdoor connectivity. This space supports restorative experiences by providing natural ventilation and contributing to improved indoor air quality through phytoremediation. The garden's design incorporates native plant species to foster a sense of place and environmental stewardship.
- Plan and Form: The architectural plan features sharp, clean lines that create a sense of order and precision. This geometric clarity contrasts with the fluidity of the natural elements, balancing modernist aesthetics with organic softness. The design employs spatial configuration and form to stimulate cognitive processes related to spatial orientation and environmental engagement.

#### Conclusion:

This villa exemplifies the integration of biophilic design with modern architectural principles, utilizing materials such as stone and wood to create a harmonious living environment. The contrast between the precise, angular lines of the architectural plan and the organic forms of the natural elements fosters a unique modernist expression. Through sophisticated lighting and strategic material selection, the villa enhances sensory experiences and promotes psychological well-being, offering a prime example of how contemporary architecture can align with natural systems to improve human health and connectivity.



SOFTWARES:AUTOCAD, 3DSMAX,VRAY,PHOTOSHOP

SEPID HOUSE DESIGN, MASHHAD, IRAN  
DESIGN YEAR:JULY 2023



AS IT KNOWN SEPID MEANS WHITE. THE REASON FOR USING THIS WORD WAS THAT 99% OF THE MATERIALS USED IN THIS VILLA WERE WHITE IN ORDER TO MAKE THE SPATIAL CONNECTION BETWEEN INSIDE AND OUTSIDE IN SUCH A WAY THAT THE SENSE OF OUTSIDE IS TRANSFERRED TO INSIDE.

WHITE IS A COLOR THAT CAN BE SEEN AS A COMBINATION OF ALL THE COLORS OF THE SPECTRUM.

WHITE COLOR IS CONSIDERED POSITIVE, BRIGHT AND EXCITING

THE IMPORTANT POINTS THAT HAVE BEEN TAKEN INTO CONSIDERATION IN DESIGNING THE PROJECT;

SIMPLE AND COMPACT DESIGN THAT BRINGS A SENSE OF COMFORT TO THE HOME

ALLOCATING A SPACE TO CONVEY THE SENSE OF NATURE IN THE HOUSE, ALONG WITH THE DESIGN OF WIDE, TALL GLASS AND A CEILING TO DEAL WITH NATURE.

**CONSIDERING THE WORK ROOM IN A COZY AND QUIET PLACE IN THE PLAN.**

AND FINALLY, IN THE DESIGN OF THIS HOUSE, THE IDEA OF MORE TO LESS HAS BEEN CONSIDERED;

SO THAT, AT THE SAME TIME, THE SOLID VOLUME OF THE HOUSE HAS BEEN PLAYED WITH, SO THAT WE HAVE LARGE SPACES ON THE GROUND FLOOR, AND THE NEXT 2 FLOORS OF THE USES ARE DIVIDED, AND ONLY ONE SPACE ON THE LAST FLOOR IS SPECIALLY DESIGNED.

SOFTWARES:AUTOCAD, 3DSMAX,VRAY,VANTAGE,PHOTOSHOP

● MODERN FACADE DESIGN,  
DESIGN YEAR:FEBRUARY 2022



Viandante della neve



# LESS HOUSE



09

## Duplex House Design with a Solid and Cubic-Inspired Structure.....

This project involves the design of a duplex house that draws inspiration from cubic forms, with an emphasis on extreme solidity and clarity in its lines. The use of materials such as concrete, wood, glass, and metal in this minimalist and modern design creates an environment that is not only aesthetically pleasing but also deeply engages with cognitive and neural processes.....

### Design Objectives and Approach.....

The primary goal of this design was to create a space with high solidity and geometric precision, capable of stimulating the brain's neural networks and evoking a sense of security, stability, and cognitive engagement. The cubic and solid structure is crafted to elicit profound cognitive responses, directly interacting with the limbic system and spatial processing areas of the brain. This approach, rooted in environmental psychology, fosters a sense of safety and control, while the overall solidity challenges and stimulates the mind.

### Materials and Strategies.....

- Concrete: Concrete serves as a fundamental material, providing a robust and enduring structure. Its thermal properties and high compressive strength create a space that influences the autonomic nervous system, enhancing feelings of security and control. This sense of stability is particularly processed in brain regions like the amygdala, which are associated with emotional responses, resulting in positive psychological reactions.

- Wood: Wood, with its natural and organic texture, contrasts with concrete, interacting directly with tactile sensations and the parasympathetic nervous system. This contrast promotes a sense of balance and stress reduction, while the warm and natural textures of wood stimulate sensory systems in the brain, enhancing feelings of calm and refuge.....

- Glass: Glass, as a transparent and ethereal element, plays a key role in connecting the interior spaces with the exterior environment. From a neurobiological perspective, the transparency and natural light that glass allows into the interior spaces positively influence circadian rhythms and the regulation of hormones such as melatonin, improving mood and concentration among occupants.

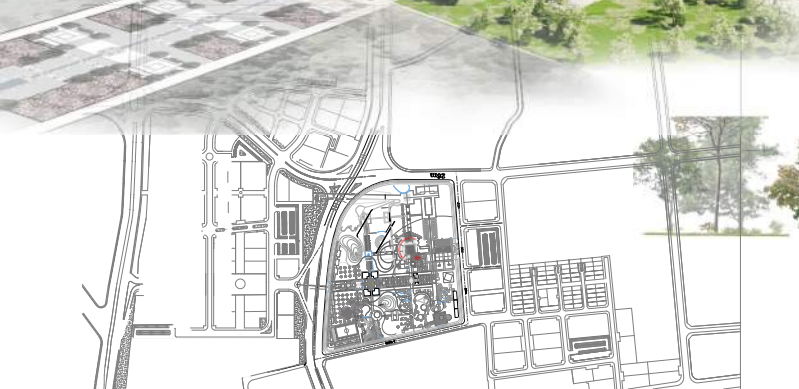
- Metal: Metal, with its industrial and minimalistic properties, is utilized in structural details and architectural connections. This material, emphasizing geometric precision and clarity, enhances cognitive functions such as focus and problem-solving. In terms of environmental psychology, metal contributes to a heightened sense of control over the environment and, through stimulating the prefrontal cortex, influences decision-making and planning processes.....

The main site was previously used as a military barracks for many years and is now available as an urban brownfield.

In order to present a naturalistic view of the war to express gratitude to the army organization for providing this site to the citizens, and to reduce the burdens of nature and prevent the destruction of the existing facilities and buildings, it is considered that the steel structure of some is intended to preserve and restore the buildings and halls in whole and in part, and then symbolically, by keeping 27 bare columns as a reminder of 27 operations during the war. In this way, the renovated halls will be used as greenhouses and other spaces required by the garden, and a brief history of the relevant operations will be written on each of these columns, which in addition to creating space, will preserve collective memories, create a sense of curiosity and increase It will provide awareness for next generations.

02









1. Greenhouse
2. Mosque
3. Illuminating Platform
4. Axis of Imagination
5. Mansion Entrance
6. Roses Garden
7. Porch of the Shams
8. Porch of Mysticism
9. Turquoise Garden
10. Embodiment of the sky
11. Pool
12. Evolution Bridge
13. Amphitheater
14. Flying Hill
15. Dream Garden
16. Wishing Garden
17. Paradise of achieve
18. Axis of Meaning
19. Mansion
20. Silence Garden
21. Exercise in Silence
22. Playground
23. Audience Platform
24. Hill of the Behrangi
25. Kids Garden
26. Kids Playground
27. Kindergarten
28. Cafeteria
29. Toilet
30. Jogging Track
31. Walking Pathway







SOFTWARES : 3Ds MAX-LUMION

# SARVESTAN RESIDENTIAL MODELING





KGM VILLA



BALLBRING



# HATCHI APARTMENT





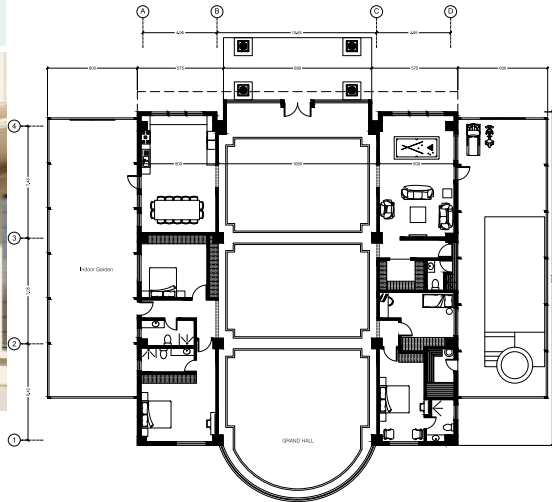


VILLA



07

STELLA





The employer was the oldest son of a grandmother who needs constant care and is also very hospitable. His two children requested her old garden house-time-again building for her to live in. It room for the grandmother and her nurse is designed with easy access to the kitchen, back porch, main garden, elevator and wheelchair accessible bathroom.

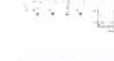
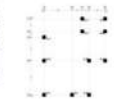
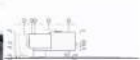
The legal challenge we faced in this project was that the municipality only gave permission for the area of the old building around 2500 sqm usage area so we were able to create all the necessary spaces by creating wide corridors on the first floor. The architecturally great of four structural engineers who implemented the architectural design.



VILLA MOTHER

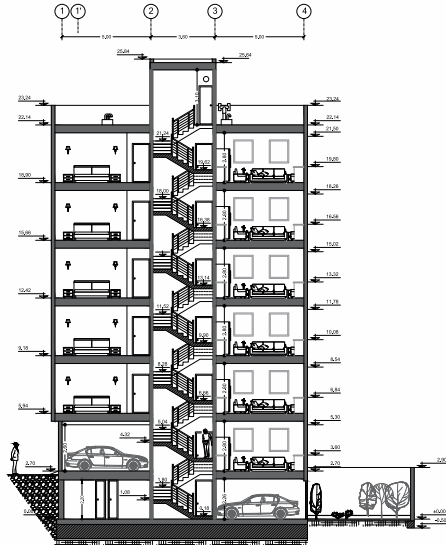


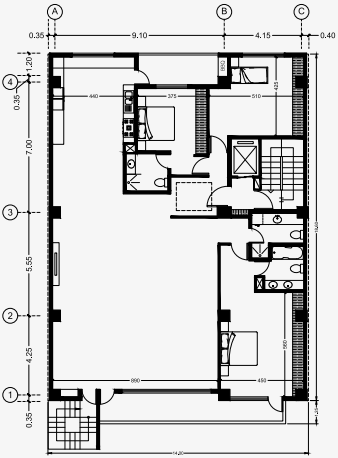
Premium Class Project  
Full Detailed Architectural and Structural Drawings  
3D Modeling, All Facades, Landscape Presented



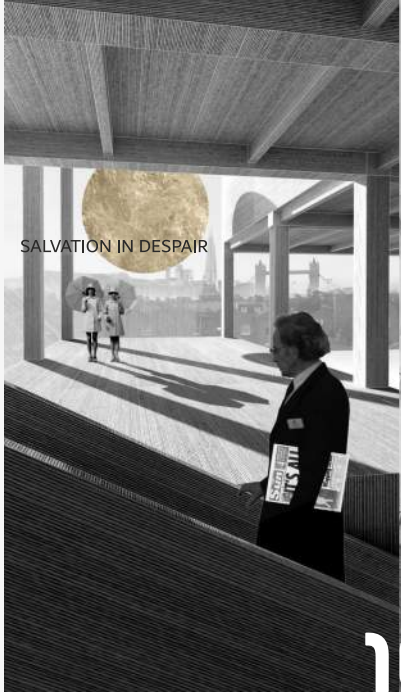


# DUREZZA Facade Alternatives





FLOORS PLAN

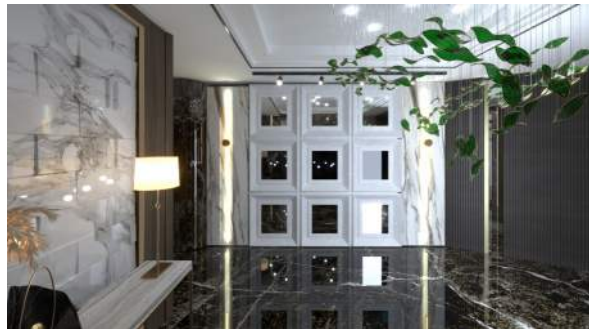


SALVATION IN DESPAIR



SOME OF INTERIOR DESIGNS, MODELING AND REALISTIC RENDERINGS OF OUR DESIGN AND CG OFFICE





## APADANA TOWER LOBBY RENOVATION

softwares: 3Ds max-Vray-Photoshop





Brefoe



---

Product & Furniture  
Modeling & Rendering





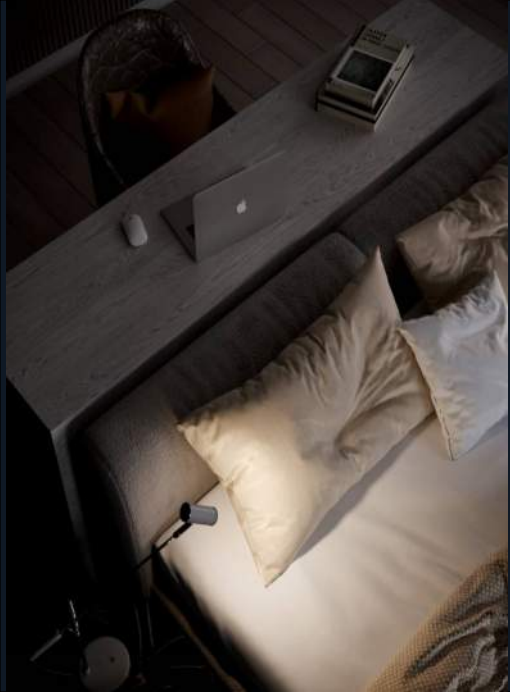
**ELCORT VILA**

MODELING

& MAQUETTE RENDER

SOFTWARE: 3Ds MAX





REALISTIC RENDERS



SOFTWARES : 3Ds MAX-VRAY-PHOTOSHOP